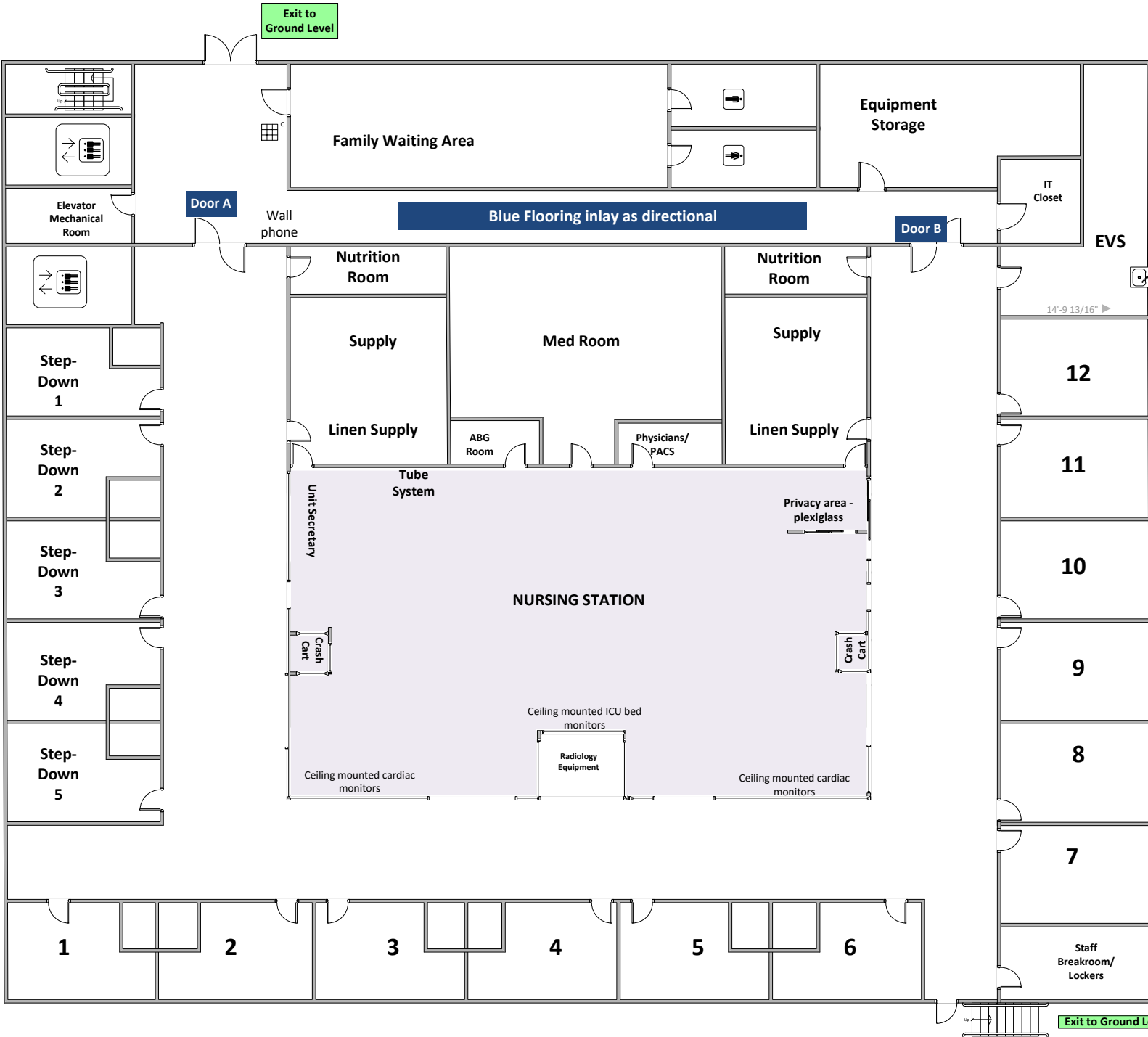


New ICU 9/8/2023 Design 6



Sleeping Suite Max is 10,000 ft².

Exit Access - All patient care suites require exit access directly to a corridor or to a horizontal exit directly from the suites.
 Additional Exit Access - An additional remotely located exit access door must be provided for patient sleeping suites more than 1000 ft² (93 m²) and patient care non-sleeping suites more than 2500 ft² (230 m²). Second exit access doors are permitted to be to one of the following:
 *An exit stair *An exit passageway *An exit door to the exterior *Another suite provided separation between suites is equivalent to corridor
 Travel distance - Not to exceed 100 ft (30 m) to an exit access door or horizontal exit door from any point in a patient care suite. Not to exceed 200 ft (61 m) between any point in patient care suite and an exit [150 (46 m) in existing construction not protected throughout by approved electrically supervised sprinkler system].