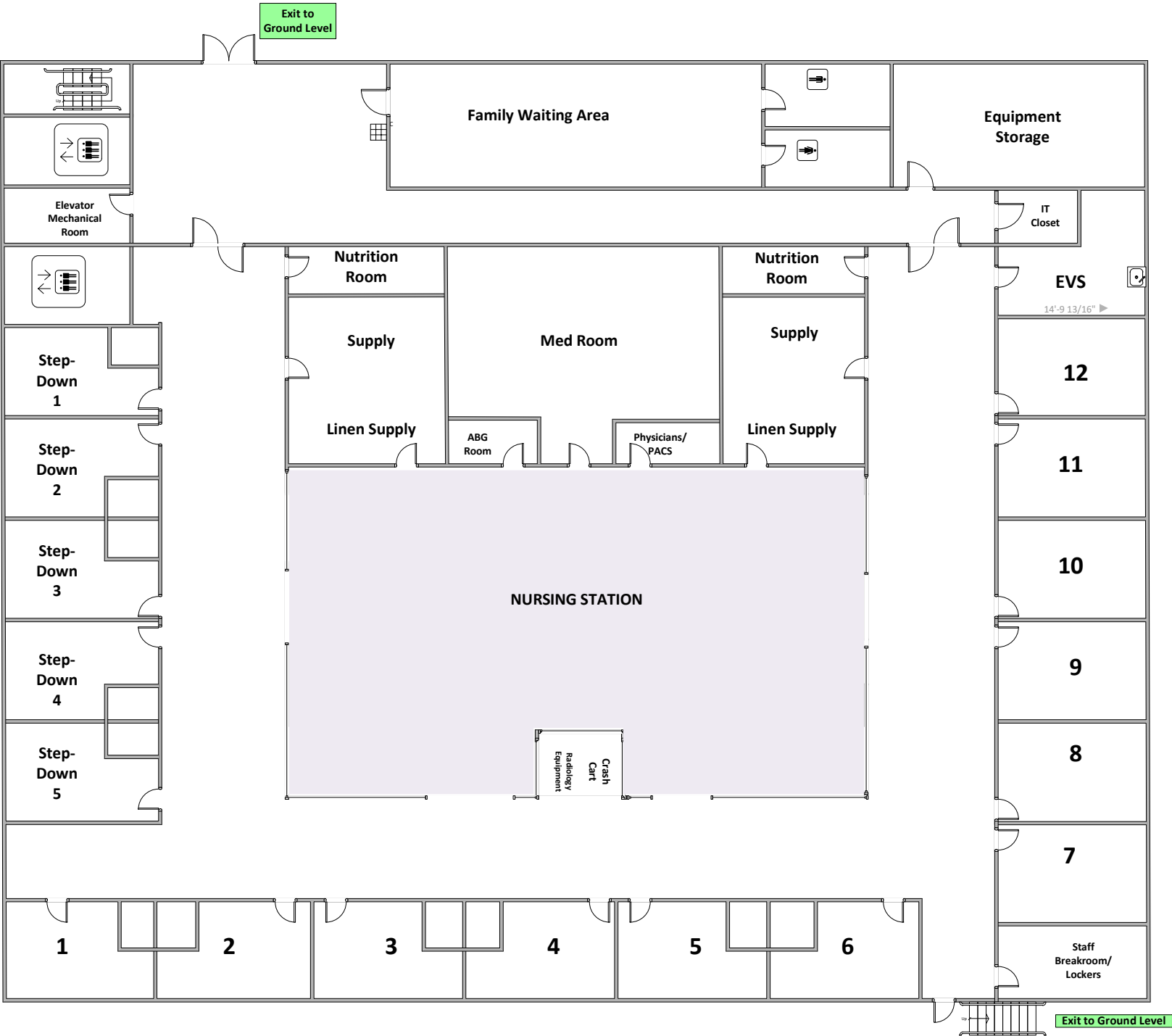


New ICU 9/1/2023 Design 5



Sleeping Suite Max is 10,000 ft².

Exit Access - All patient care suites require exit access directly to a corridor or to a horizontal exit directly from the suites.
 Additional Exit Access - An additional remotely located exit access door must be provided for patient sleeping suites more than 1000 ft² (93 m²) and patient care nonsleeping suites more than 2500 ft² (230 m²). Second exit access doors are permitted to be to one of the following:
 *An exit stair
 *An exit stair
 *An exit passageway
 *An exit door to the exterior
 *Another suite provided separation between suites is equivalent to corridor
 Travel distance - Not to exceed 100 ft (30 m) to an exit access door or horizontal exit door from any point in a patient care suite. Not to exceed 200 ft (61 m) between any point in patient care suite and an exit (150 (46 m) in existing construction not protected throughout by approved electrically supervised sprinkler system.